

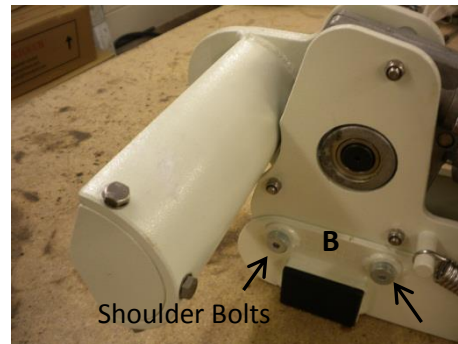
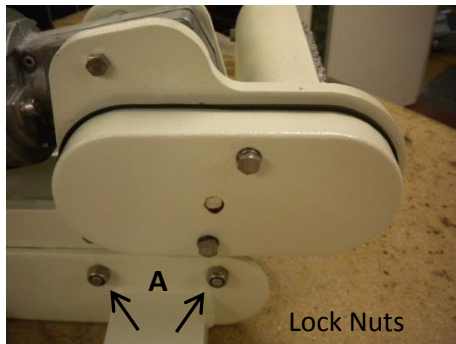
MODELS 1/2/3/4/5/6

REPLACING THE HEX SHAFT (PIN TYPE)

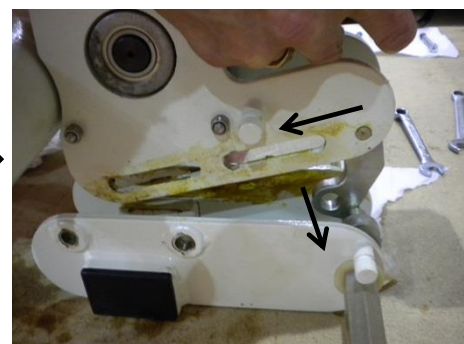
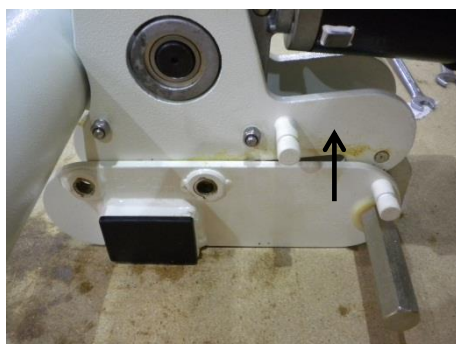


Remove Motor Assembly From Lower Carriage

- 1) a) Remove the 2 x M8 Nyloc Lock Nuts (13mm Hex)
b) then the shoulder bolts using and M5 Hex Key.

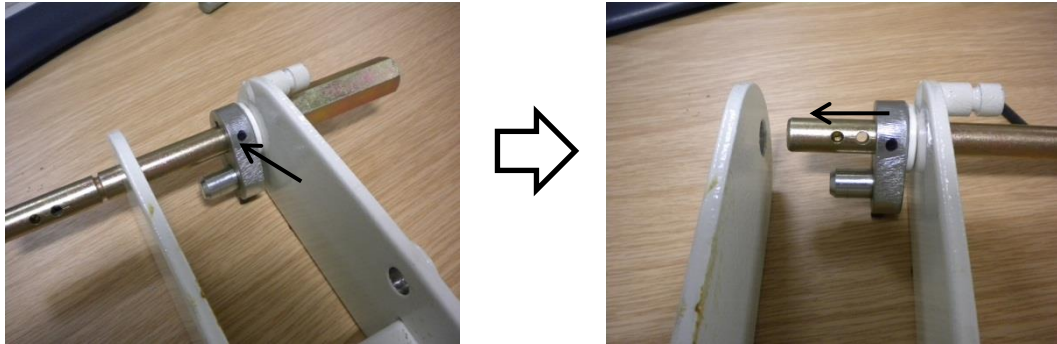


- 2) Carefully lift the top half from the lower carriage then slide sideways to remove the cam from the push rod. Then remove the return spring.

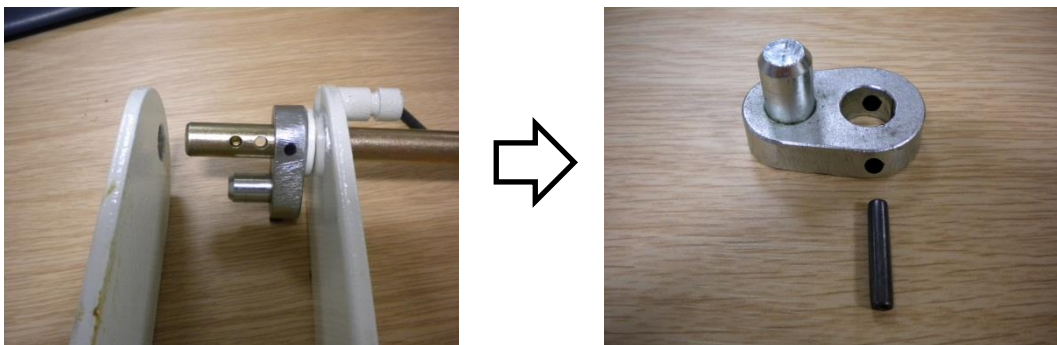


Remove The Old Hex Shaft

- 3) Knock out the old pin using a 4.5mm pin punch. Slide the cam along the hex shaft.

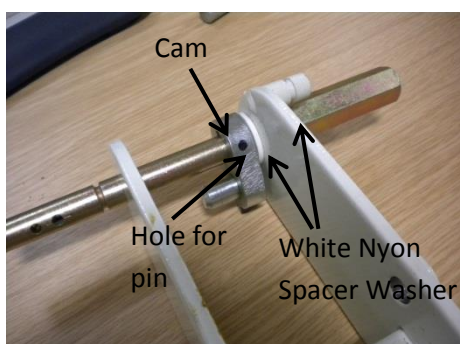


- 4) Slide the old hex shaft out of the lower carriage



Install The New Hex Shaft

- 5) Slide the new hex shaft through the lower carriage, ensuring the cam and nylon washers are in the correct position. Line up the holes in the cam & hex shaft. Place the pin through the hole in the came

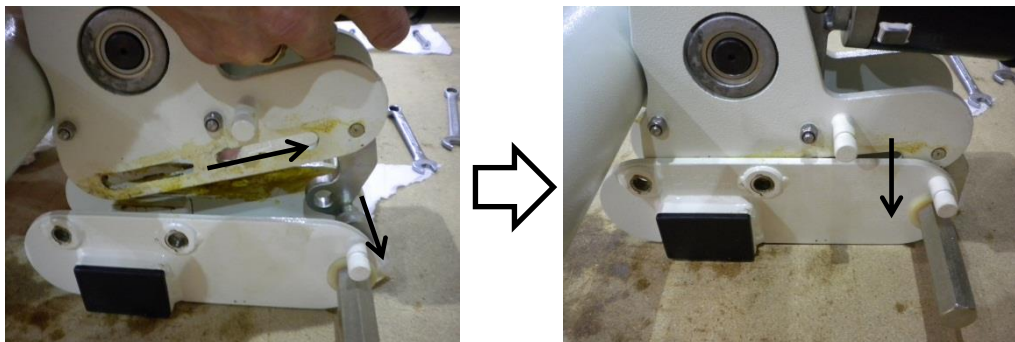


6) Tap the replacement pin through the hole, fixing the cam in position



Re-attach Motor Assembly To Lower Carriage

7) Carefully lower the top half of the Powrtouch over the lower half and re-connect the cam assembly. Replace the return spring.



8) a) Replace the 2 x shoulder bolts,

b) then the M8 Nyloc Nuts. Tighten to 10nm

