

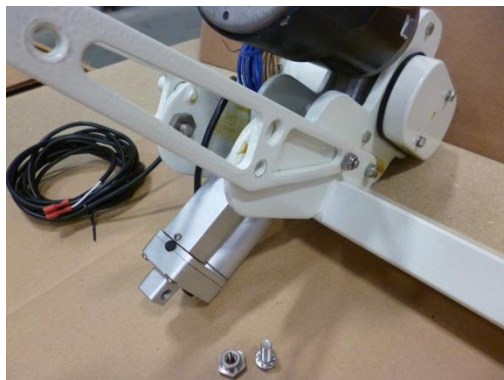
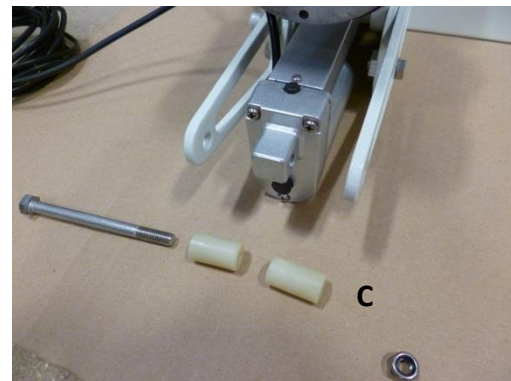
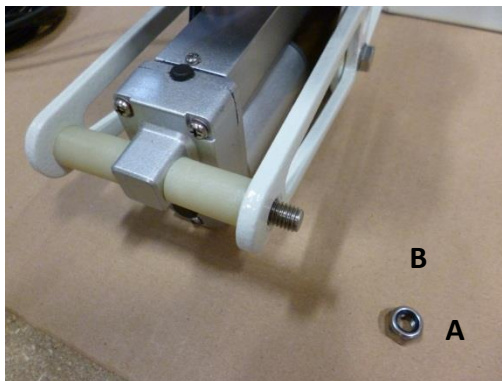
MODELS 1/3/4/5/6

CHANGING A POWRACTUATOR MOTOR



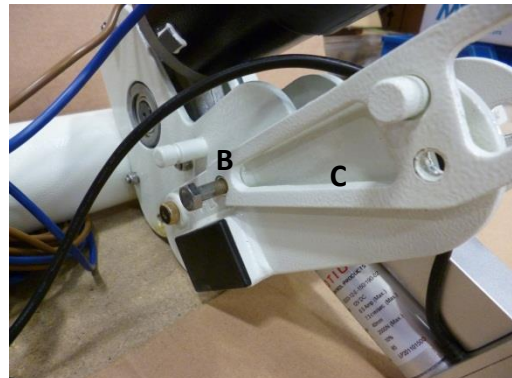
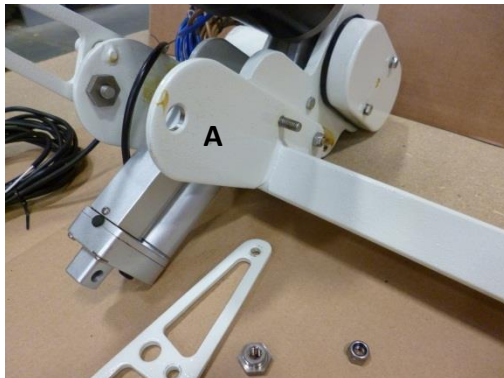
Photograph of mover complete with Powractor engagement system fitted

- 1) a) Loosen & remove the M8 Nyloc nut.
- b) Slide the M8 bolt in the direction shown below to remove.
- c) Remove both Nylon spacers.



- 2) a) Remove the inner actuator bracket securing M8 bolt & special nut as shown below.
b) Remove the M8 Nyloc Nut as shown below.
c) You can now remove the inner bracket.

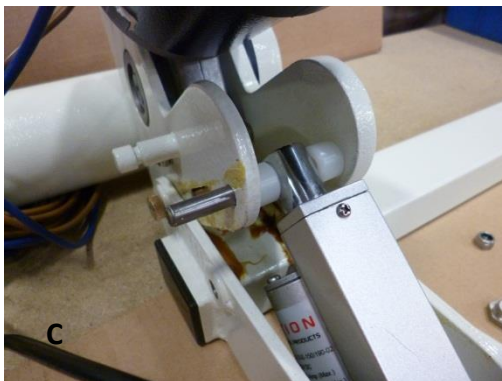
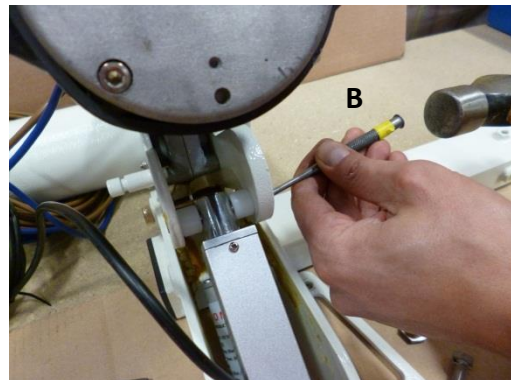
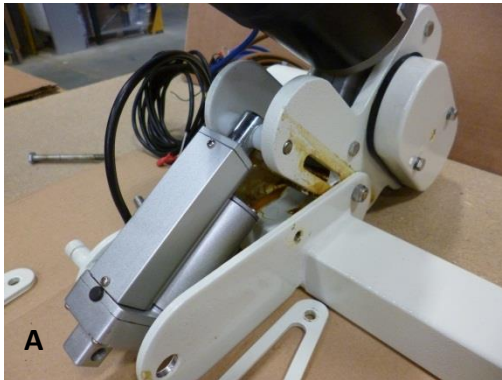
- 3) a) Remove the outer actuator bracket securing M8 bolt & special nut as shown below.
b) Remove the M8 bolt as shown below.
c) You can now remove the outer bracket.



- 4) a) Using a screwdriver or suitable punch, remove the metal support tube as shown below.
b) Pull out with needle nose pliers



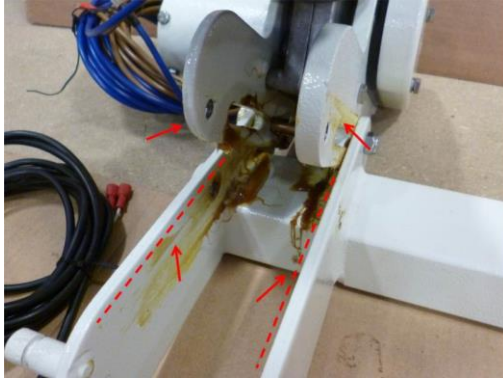
- 5) a) The top half of the mover will now lift upwards.
b) Using a punch tap out the anchor pin
c) Remove the 2 nylon spacers.



- 6) You will now be able to remove the actuator motor.



7) Liberally apply grease to all the areas shown in the photograph below.



8) To refit a replacement the actuator motor, simply follow the above instructions in reverse.